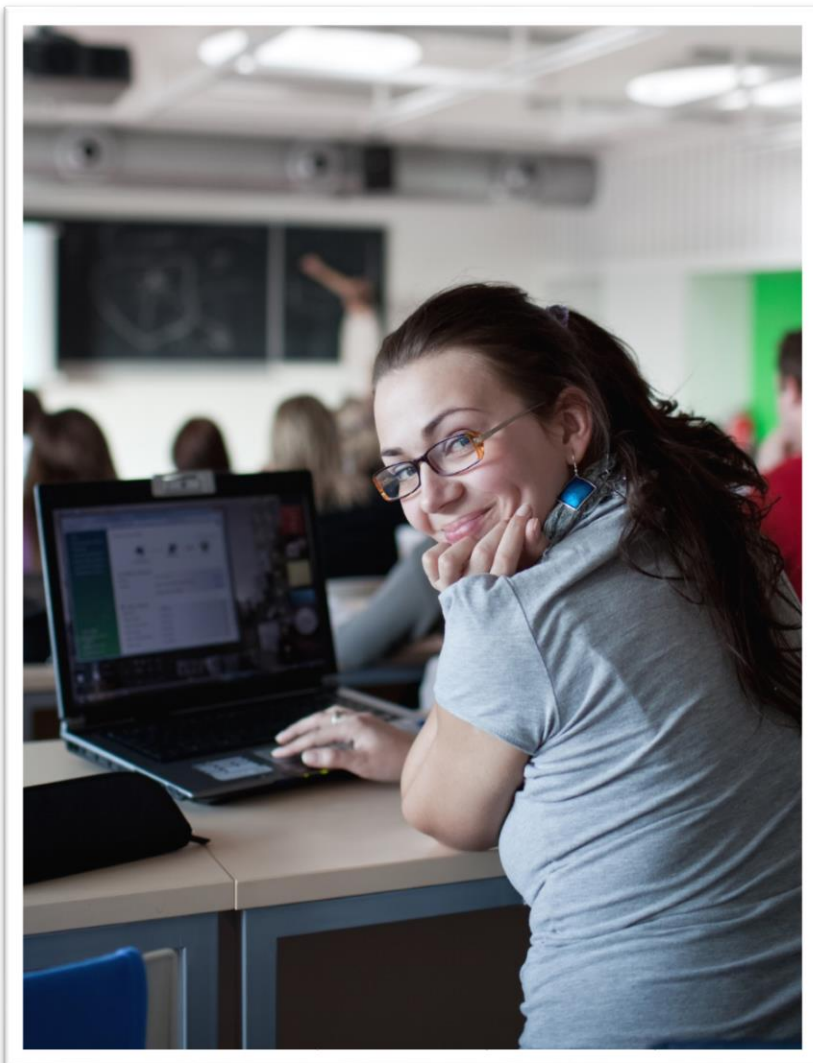


Weber School at Grace College Indianapolis



Faculty

Tim Ziebarth, M.A., M.B.A.
Executive Dean
School of Professional and Online
Education

Indianapolis

Shirley Smith Ph.D.
Site Director

Program Mission and Goals

The Weber School at Grace College offers a biblically anchored, affordable, and accessible Christian education to college-age students in urban areas by offering Associate of Arts in General Studies or Biblical Studies.

An associate degree better prepares students for employment and readies students for completion of a bachelor's degree in the field and school of their choice. By obtaining the Grace Core at the Weber School, students are able to reduce the amount of debt accumulated by a traditional four-year private Christian college education. By being located in Indianapolis, more students are afforded the opportunity to be a part of the Grace College community.

Weber School Program Description

The Weber School at Grace College is a two-year program designed for the college freshman and sophomore who desires affordable and accessible higher Christian education. This 60-hour program leads to an associate degree with a concentration in liberal arts or general business which can easily lead to the completion of a bachelor's degree through our GOAL degree completion program, on the Grace College main campus or at the school of their choice.

Program Purpose

The Weber School at Grace College exists to provide postsecondary education that is affordable, accessible and anchored in the Word of God.

Schedule and Delivery Format

Classes are offered on-site Monday through Thursday during the academic year and students take two additional online courses per year. All students will need regular access to a computer as classes are a hybrid of classroom, web-facilitation, and online learning. Information regarding the technology and user-skill requirements is available on the technology support page of the college's web site.

Admission Requirements

Applicants to the Weber School at Grace College must submit their high school transcript and ACT or SAT score (TOEFL for international students). Weber students can enjoy an easy transfer to Grace College with an abbreviated application to Grace College. Applications are available on the institution's web site.

Notice of Nondiscrimination

Grace College and Seminary is a private, not-for-profit, faith-based exempt organization as described in Section 501 (c) 3 of the Internal Revenue code. In compliance with applicable federal and state laws, Grace College and Seminary does not discriminate on the basis of race, color, national origin, age, sex, or disability in its administration of its educational policies, admissions policies, scholarship and loan programs, and athletic and other school-administered programs and activities, or in employment.

The following person has been designated to handle inquiries regarding the Notice of Nondiscrimination:

Carrie Yocum, Title IX Coordinator and VP of Administration and Compliance
Grace College and Seminary
McClain 104
200 Seminary Drive
Winona Lake, IN 46590
yocumca@grace.edu
574-372-5100 x6491

Inquiries may also be addressed to the U.S. Department of Education's Office for Civil Rights at 400 Maryland Avenue, SW, Washington, DC 20202-1100.

Community Lifestyle Pledge

Students agree to show respect for the faith commitment that Grace practices and agree to abide by certain of the institution's community guidelines (avoidance of disrespecting others, sexual misconduct, illegal drugs, gambling, coarse or obscene language, tobacco, alcoholic beverages, and such conduct) while on campus or engaged in Grace activities. The student understands that this extends to any advocacy initiatives in which the individual might participate while a Grace student.

Note about the Catalog

Each program at the institution maintains a catalog in which basic academic information related to the program's goals, expectations, admission, policies, accreditation, and other pertinent information is described. This applies to undergraduate, non-traditional (e.g., online, adult degree completion), graduate, and seminary programs.

Grace makes every attempt to provide information that, at the time of publication, most accurately describes the policies, procedures, and requirements of the institution and its individual programs.

The provisions of the academic catalogs are, therefore, to be considered a guide and not to be regarded as a contract between any student and the institution. Course content and institutional policies governing admissions, tuition, and campus life are under constant review and revision.

Grace reserves the right to change any statement contained within the catalog at any time and without prior notice including academic provisions, policies, or requirements (e.g., modifications to classes, fees, personnel, academic policies, and programs) and the right to withdraw or amend the content of any courses described in the catalogs as may be required or desirable by circumstances. Grace will, however, make every attempt to give students reasonable prior notice to changes in policies and other catalog content when possible and rarely implements policy changes during an academic year.

Courses of study for non-traditional, graduate, and seminary programs and check sheets for undergraduate students may undergo revisions; however, these are typically implemented in the fall of the new academic year.

All students are expected to be familiar with the catalog(s) associated with their selected program(s) of study with the understanding that policies and procedures of their selected program(s) may change from year-to-year. The current year's catalog should, in most situations, be considered the catalog applicable to the student.

In some programs, students are asked to acknowledge in writing their receipt of the program's catalog. Changes to an academic catalog that are necessary following the start of the fall semester will be noted as an addendum to the original catalog.

Archived catalogs are maintained on the institution's web site.

It is each student's responsibility to schedule regular meetings with his or her academic advisor and to be knowledgeable about institutional requirements, academic regulations, and calendar deadlines specified in the catalogs and academic program publications. Students should read the catalog carefully and consult with an advisor to determine how these policies relate to their individual circumstances.

Contact

For additional information about admission requirements or course enrollment and completion, please contact the staff at the Weber School at Grace College:

INDIANAPOLIS

Shirley Smith, Indianapolis Site Director

Phone: **317-200-3837**

OR 1-800-544-7223 Ext 6205

Email: smithsd@grace.edu

Courses for the Associate of Arts in General Studies with a Concentration in Liberal Arts

An associate degree (60 hours) is comprised of the 13 general education Grace Core courses (39 credits) required of all Grace College students. In preparation for a bachelor's degree, students take 3 credits of math and social science for a B.S. An additional 21 credits completes the liberal arts concentration for the associate degree.

All courses are designed and approved by the Grace College faculty and are comparable to those taught at the main Grace College campus. Courses are taught by Grace faculty or Grace approved instructors.

Grace Core (39 credits)

The Grace Core is the required general education curriculum expected of all students at Grace College.

Bible/Philosophy/Ethics

1. BIB1050 Exploring the Bible
2. BIB2010 Scripture and Interpretation
3. FYE1010 Freshman Foundations
4. PHI3200 Philosophy and Critical Thinking

Humanities

5. ECN3000 Consumer Economics
6. HIS1380 Contemporary America and the World
OR HIS-2050 or GEO-3800 or POS-2200
7. HUM2100 Creative Arts and Culture
8. HUM2200 World Cultures (Students who transfer to main campus will be required to go on a cross-cultural or Go Grace mission trip.)
9. HUM 2000 OR Global Perspectives

Communications

10. COM1100 Public Speaking
11. ENG1100 Effective Writing

Math and Sciences

12. PSY1100 Introduction to Psychology
OR PSY1200
13. MAT3200 Probability and Statistics
14. SCI2030 Faith, Science & Reason
Or SCI-1160 or SCI-2000 or SCI-2360

Liberal Arts Emphasis (Choose 7 courses)

15. ART2110 Art and Design Fundamentals
 16. SOC1100 Introduction to Sociology
 17. HIS 3390 Religion in American History
 18. COM2130 Interpersonal Communication
 19. POS2010 Introduction to Political Thought
 20. MAT1120 College Algebra
 21. APL2030 Applied Learning (up to 6 credits)
 22. ISM1200 Integration of Software Tools
 23. BIB3300 Essential Doctrinal Themes
 24. LIT3000 Classics of World Literature
 25. PHI 3100 Ethics
 26. BHS2520 Leadership Principles and Development
- OR** MLD1000 Principles of Ministry Leadership

Courses for the Associate of Arts in General Studies with a Concentration in General Business

An associate degree (60 hours) is comprised of the 13 general education Grace Core courses (39 credits) required of all Grace College students. In preparation for a bachelor's degree, students take 3 credits of math and social science for a B.S. An additional 21 credits completes the general business concentration for the associate degree.

All courses are designed and approved by the Grace College faculty and are comparable to those taught at the main Grace College campus. Courses are taught by Grace faculty or Grace approved instructors.

Grace Core (39 credits)

The Grace Core is the required general education curriculum expected of all students at Grace College.

Bible/Philosophy/Ethics

1. BIB1050 Exploring the Bible
2. BIB2010 Scripture and Interpretation
3. FYE1010 Freshman Foundations
4. PHI3200 Philosophy and Critical Thinking

Humanities

5. ECN3000 Consumer Economics
6. HIS 1380 Contemporary America and the World
OR HIS-2050 or GEO-3800 or POS-2200
7. HUM2100 Creative Arts and Culture
8. HUM2200 World Cultures
Students who transfer to main campus will be required to go on a cross-cultural or GoGrace mission trip.
OR HUM 2000 Global Perspectives

Communications

9. COM1100 Public Speaking
10. ENG1100 Effective Writing

Math and Sciences

11. PSY1100 Introduction to Psychology
OR PSY-1200
12. MAT 3200 Probability and Statistics
13. SCI2030 Faith, Science & Reason
OR SCI-1160 or SCI-2000 or SCI-2360

Business Emphasis (Choose 7 courses)

14. BUS1010 Foundations of Business
15. BUS2430 Principles of Management
16. MKT2150 Marketing Principles
17. ACC2110 Financial Accounting
18. BUS2230 Economics
19. MAT1120 College Algebra
20. COM2130 Interpersonal Communication
21. APL2030 Applied Learning (up to 6 credits)
22. ISM 1200 Integration of Software Tools
23. PHI 3100 Ethics

COURSE DESCRIPTIONS

ACC 2110 Financial Accounting

Develops an understanding and application of basic financial accounting principles. Emphasis on building and using basic financial statements and a manager's use of accounting data. This course and ACC2120 together serve as the first year of accounting. Three hours.

APL 2030 Applied Learning

This course provides an experience in reviewing, applying, and in some cases, conducting research in the student's area of professional concentration. In a workshop format, the course covers principles of research, including development of a topic, review and synthesis of scholarly literature, and practical application of research findings. Students write an in-depth literature review on a topic of their choice that is beyond the scope of regular course offerings. They also develop an authentic means of applying the findings from their literature review (such as a unit plan, website, professional development presentation or conducting original research). Three hours. (One Applied Learning Credit).

ART2110 Art and Design Fundamental

From the simple application of color to the complex devices that create illusionary space, this foundational lecture/studio course concentrates on the basic elements of two-dimensional and three-dimensional design. Three hours.

BIB1050 Exploring the Bible

This course provides a survey of the biblical story in its progressive unfolding of the history of redemption within the framework of creation, fall, redemption, consummation. Attention is given to the literary, historical, cultural, and theological dimensions of Scripture as it offers a meta-narrative or "worldview-story." Emphasis is placed on the unity of Scripture as it reaches its fullness and fulfillment in Christ, while at the same time recognizing key developments and differences between the various chapters of the biblical storyline. Three hours.

BIB2010 Scripture and Interpretation

Foundational principles of effective Bible study will be applied for personal study and small group Bible study leadership. Observational skills of the English text will be developed through hands-on activities

and assignments. Hermeneutical principles will be applied to various biblical genres with the goal of equipping the learner to interpret the text based on its historical/cultural and literary context. Application of the meaning of the text for spiritual formation will be emphasized as well. Three hours.

BIB 3300 Essential Doctrinal Themes

This course is designed to engage the student in the essential doctrines of the Christian faith and to help them complete the desired transference from belief to conviction in their personal faith. The purpose of this class is to examine eight areas of theology in such a manner as to allow the learners to search the Scriptures so they can begin to articulate and defend what they believe about the Christian faith. Special attention will be given to helping the students grasp the historical doctrinal commitments of Grace College and Seminary by engaging students in class discussion around those commitments. Three hours.

BHS 2520 Leadership Principles and Development

This course has been designed to expose students to a variety of leadership principles and models used in business, ministries, educational institutions, and other organizations. This course was originally designed by Learning House, Inc. and has been modified by Grace College instructors over the past 5-6 years. In this course, students will interact with and engage the content in order to think critically, apply theory to past, present, and future leadership opportunities, and synthesize a personal, yet research-based approach to various leadership opportunities. Three hours.

BUS 1010 Foundations of Business

Fundamentals of Business provide an overview and understanding of the current issues and challenges facing today's businesses, both small and large. The design of the course is to enable the class participants to improve their understanding of the basic concepts of business. The class is a broad survey of fundamental business concepts, such as management, marketing, human resources, accounting, and financial management and policy. General principles of business ethics and business law are also discussed. Students will reflect on all disciplines within the School of Business and be able to more readily decide a potential career path. This course introduces students to the business world, while it lays the foundation for their meaningful participation in more advanced classes. Three hours.

BUS 2230 Economics

The role of Christians in the marketplace is discussed with consideration of economic reasoning and methodology through examination of fundamental concepts in micro- and macroeconomics and through extension and applications of economic theory. Examination of the general functioning of a price system using fundamentals of supply and demand is evaluated. Exploration of the variety of market forms, theory of factor incomes and the effects of government intervention to promote efficiency and equity occurs. Three hours.

BUS 2430 Principles of Management

Surveys the four major managerial functions: planning, organizing, leading and controlling. Within a biblical framework examines developments from scientific management to ethics, diversity, social responsibility and globalization. Three hours.

COM 1100 Public Speaking

A study of communication theory as applicable to public speaking. Students explore the components of an effective speech, as well as current applications of speaking skills. Emphasis will be placed on practicing and displaying these skills in a laboratory setting. Three hours.

COM 2130 Interpersonal Communication

An examination of the process of communication and interpersonal relationships focusing on the role of the self, people perception, the environment, and the interaction of interpersonal orientations. Personal skills in resolving conflict and stimulating friendships are examined through exposure to theory, practical exercises, and the analysis of experiences in current relationships. Three hours.

ECN 3000 Consumer Economics Consumer Economics is a course designed to prepare students to understand the economic system from a Biblical perspective and how it affects individuals as consumers, producers, and citizens. Students will integrate knowledge skills and practices required for management of resources in a technologically expanding global economy. Real world topics covered will include income money management spending and credit as well as saving and investing. Core skills in decision making problem solving critical thinking goal setting management of multiple roles and using technology are integrated into the course content. Three hours.

ENG 1100 Effective Writing

The principals involved in writing clear expository, persuasive, and researched papers are studied and practiced. In addition, the English language is examined from a linguistic perspective. Three hours.

FYE 1010 Freshman Foundations

This is a practical, academic course which is intended to prepare new students to engage in three key areas of their first-year transition into college: Understanding who we are, understanding who they are, and understanding our Call. This course is designed to make their years at Grace the best experience possible. This course will help students discover their God-given strengths, navigate through current college issues, and help the student better understand what makes a Christian liberal arts education valuable. It will also introduce students to the value of service in the local community and introduce students to prospective departments and faculty within the institution, assisting in the selection process of choosing a major and a career. Three hours.

GEO 3800 The Geography and History of Africa

This is a course designed to give students an appreciation of the African continent. Discussion will center on understanding the context of the physical, cultural, political, and historical geography of its peoples. The course will have a specific focus on the countries of Africa south of the Sahara, and focus on issues such as political leadership, socio-economic strategies, governmental systems, and agriculture. Three hours.

HIS 1380 Contemporary America and the World

This course is a topical approach to the cultural history of the United States from the end of the Second World War to the present, with special emphasis on America's role in global affairs. Students will not only gain a broad understanding of America's place in recent world events but also a specialized knowledge of various relevant topics and their historical context. Topics covered in this class have included the Cold War, the 1960s, American evangelicalism, and terrorism. Three hours.

HIS 2050 American Journeys

In this topical survey of the history of the United States to the end of World War II, students will be History and Political Science introduced to the major issues, broad developments, and perennial questions that cut to the heart of American identity. The course will cover such topics as the ideological origins of the American nation, the historical relationship between state and national sovereignty, race and slavery, sectional tensions and the Civil War, social and religious movements, and the culture wars that continue to impact American society today. Three hours.

HIS 3390 Religion in American History

From major world religions to a host of small religious movements, the variety of religious expression in America is almost endless. Indeed, religious pluralism and diversity has become one of the defining features of American society. Naturally, this diverse religious landscape has not taken place overnight. Rather, it has developed over centuries and has included a complex spectrum of theological approaches, ethical positions, charismatic men and women, ordinary citizens and even political involvement. This course is meant to provide students with an introduction to the religious diversity in America while emphasizing its historical context and development. Three hours.

HUM 2000 Global Perspectives

In this course, students engage divergent outlooks from around the world, grappling with cultural differences and presuppositions. Defining literary works, films and guest speakers from different continents set the stage for literary and cultural discussions. This course will also provide a framework for understanding God's heart for the nations, and will serve as the preparation for the Cross-Cultural Field Experience. Three hours.

HUM 2100 Creative Arts and Culture

Through a global, thematic approach, this course explores the human phenomenon of creativity. Posing the question "Why creative arts?" this course focuses on exploring how culture and creativity reflect each other within the realm of visual and performing arts. Through themes of survival, religion, the state, and self, this course examines artists' roles within cultures, the way art is made or performed, how meaning is derived, and how art is used, kept or destroyed. Required experiential activities for engaging in visual and performing arts include such things as attending museum exhibits, concerts or theatrical productions. Three hours.

HUM 2200 World Cultures

World Cultures is a team-taught course that seeks to develop a biblical lens for seeing the world in order to live meaningfully and biblically in increasingly multi-cultural societies. Major themes in the course include Christ's incarnation as a model for crossing cultural boundaries, tools necessary for the cultivation of cultural intelligence, an introduction to the basic beliefs of Islam, and a general awareness of world geography. Three hours.

Students who attend main campus will also need to complete a cross-cultural field experience

ISM 1200 Integration of Software Tools

This course is designed to introduce students to some of the programs within the Microsoft Office 2013 Suite and use them to be productive in their classes and future jobs. Introductory to advanced skills will be taught in Word 2013, Excel 2013, and PowerPoint 2013. If the students desire, this class will help prepare them to take the Microsoft Office Specialist Exams. Three hours.

LIT 3000 Classics of World Literature

A survey of the prominent literature from Europe, as well as from the rest of the world, excluding Britain and the U.S.A. By examining epics, dramas, short stories, novels, and poems, the student obtains a balanced background in the literary traditions which have arisen in diverse cultures. Three hours.

MAT 1120 College Algebra

Topics include algebraic operations, manipulation of functions, polynomial equation solutions, inequalities, logarithms, and exponentials. There will be practice with solving systems of equations, graphing, and algebra applications. Three hours.

MAT 3200 Probability and Statistics

This is an introductory course in probability and statistics. Topics covered include probability theorems and models, statistical techniques, and practices for applying statistical techniques in the world around us. Three hours.

MKT 2150 Marketing Principles

This course provides a decision-oriented overview of marketing management in modern organizations. The objectives of the course are to provide a broad introduction to marketing concepts, the role of marketing in society and in the firm, and the various factors that influence marketing decision making. Three hours.

MLD 1000 Principles of Ministry Leadership

This course designed to equip students to serve effectively as ministry leaders in a variety of faith based nonprofit contexts. The course provides an introductory and holistic overview of principles inherent to the practice of Christian ministry leadership. Researched based theories and models, organizational design, and leadership principles will be discussed and integrated within a framework of biblical, theological, organizational, and cultural perspectives. Three hours.

PHI 3100 Ethics

Students will explore ethical principles for making judgments and choices on moral issues. They will study what various philosophers have said is good and right and leads to true happiness. They will examine various systems of ethics and values as well as the philosophical basis behind them. Applying biblical data to contemporary ethical issues, they will develop a Christian view of ethics. Three hours.

PHI 3200 Philosophy and Critical Thinking

This course is an introduction to Christianity and the life of the mind. It examines how faith and intellect relate. Course materials will include an examination of modern Christianity and ask if it is sufficiently rigorous to face the postmodern world. The course will also examine how to investigate an idea by raising the right kinds of questions. How has Christianity come to us in history? What are its core ideas? Is theology static or a process? How does Christianity differ from other worldviews? How should a lively and vigorous Christianity be expressed in the lives of individuals and churches? This course is required in the liberal arts curriculum. Three hours.

POS 2010 Introduction to Political Thought

This course includes several approaches to political philosophy. First, it provides a general overview of the dominant political ideologies from the ancient to the contemporary world. Second, it provides a general survey of some of the most influential political thinkers whose writings and theories have given rise to the modern political landscape. This will focus heavily on the development of western political thought but may include selections from Islamic civilization, southeast Asia, or other nonwestern contexts. Third, this course will include an introduction to more recent thinkers, or even popular personalities, whose work is relevant to the intersection of faith and politics. Three hours.

POS 2200 Introduction to American Government

This introduces students to how the political system in America functions. It focuses on the actual workings of the American government and starts with the cultural and constitutional contexts of American politics. Three hours.

PSY 1100 Introduction to Psychology

An introduction to psychology as the study of human behavior. Basic principles of psychology will be explored including the process of learning, memory, perception, sensation, motivation, and emotion. Personal and social aspects of human development will be emphasized. Three hours.

PSY 1200 Essentials of Behavioral Science

This introductory course in behavioral sciences provides an opportunity to learn about the major behavioral science theories, concepts and its real life applications. This course will survey topics such as child development, parenting, gender differences, stress, self-care and abnormal behavior. Students will also be encouraged during this course to increase personal awareness of how cognitive and emotional

factors influence behavior in a variety of social contexts. Additionally, this course will examine styles of relating as it pertains to employment, dating, marriage and family life. Three Hours.

SCI 2030 Faith, Science & Reason

Faith, Science, and Reason is designed to assist the student in (1) demonstrating the scope and magnitude of science and mathematics; (2) why we study these subjects; (3) knowing the limitations of these subjects; (4) where the Christian fits and operates within the scientific paradigm; and (5) how a Christian can incorporate their faith and reason within the scientific enterprise and how to use it as a productive platform when communicating to those of different worldviews. Three hours.

SCI 1160 Theories on Origins

A survey of origin theories with emphasis on creation/evolution. Explores fossils, design, thermodynamics, chronology, flood geology, life in space, and current creation research. Three credit hours.

SCI 2000 Science Matters

A study of major topics from several areas of science. Emphasis will be on understanding the scientific method with its strengths and weaknesses, an overview of scientific disciplines to foster general scientific literacy, and the interaction between science, Scripture and society. Topics will be examined from a biblical worldview and their interactions with current societal attitudes, trends and beliefs. A “hands-on” approach is emphasized with activities and data analysis. Three Hours.

SCI 2360 Introduction to Astronomy

A survey of our created universe: the solar system, types of stars, constellations, and galactic distribution. Emphasis on night observation, laboratory, and individual projects. Three hours.

SOC 1100 Introduction to Sociology

An introductory study of humans functioning in society. Basic principles of sociology will be experienced including organization, structure, strata, and problems in American society. Emphasis will be placed on observational techniques that will help to develop a spirit of active participation in the world. Three hours.